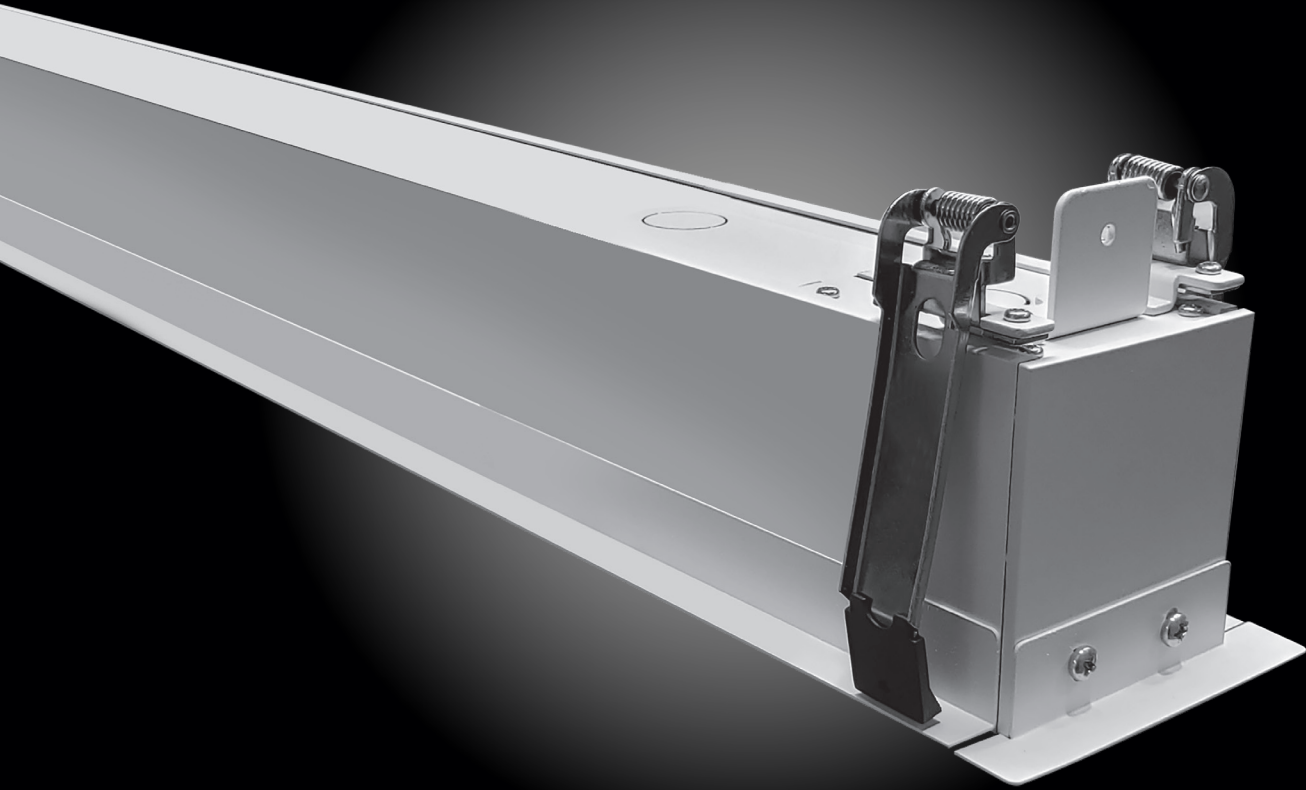


LINEAR R

Architectural Recessed Slot Fixture

DIRECT SERIES LINEAR LIGHT



LUXURIO
by INTRINSIX

DESCRIPTION:

The LUXURIO by Intrinsix Recessed Architectural Fixture is a great combination of functionality and esthetics. The color selectable options makes the environment cohesive to many different work environments such as offices, hospitals and hotels. While the flush line of light makes for a visually appealing atmosphere where employees and visitors can feel relaxed or energized. It is all up to you and your imagination.

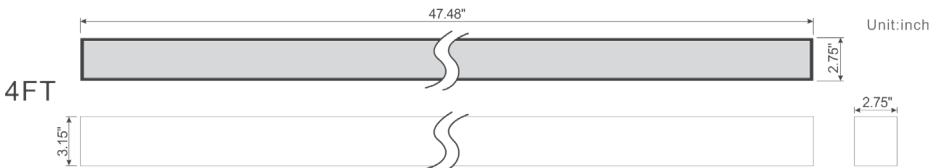
SPECIFICATION:

- Voltage: 120V to 347V
- Dimming: 0-10V
- Efficacy: White - 130Lm/W Black - 117Lm/W
- Delivered Lumens: 2600Lm-9100Lm
- VCRI: >80
- Pattern: Option - L-Shape, T-Shape, X-Shape
- DLC Listing: Premium
- Lifetime: 50,000 Hours
- Warranty: 5 Year

FIXTURE DETAILS:

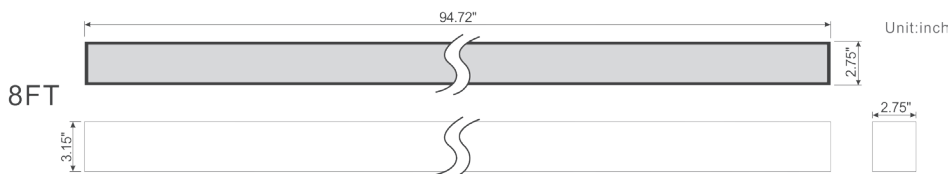
Model Number	Size	Color	Power (Watts)	CCT (K) Optional	Dimmable	Efficacy (Lm/W)	Voltage	DLC Product ID
L-RMASF04-40W-35/40/50LO-BK	4ft	Black	40	3500/4000/5000K	0-10V	117Lm/W	120v-347v	TBA
L-RMASF04-40W-35/40/50LO-WH	4ft	White	40	3500/4000/5000K	0-10V	130Lm/W	120v-347v	TBA
L-RMASF08-70W-35/40/50LO-BK	8ft	Black	70	3500/4000/5000K	0-10V	117Lm/W	120v-347v	TBA
L-RMASF08-70W-35/40/50LO-WH	8ft	White	70	3500/4000/5000K		130Lm/W	120v-347v	TBA

STRIP FIXTURE DIMENSIONS:



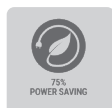
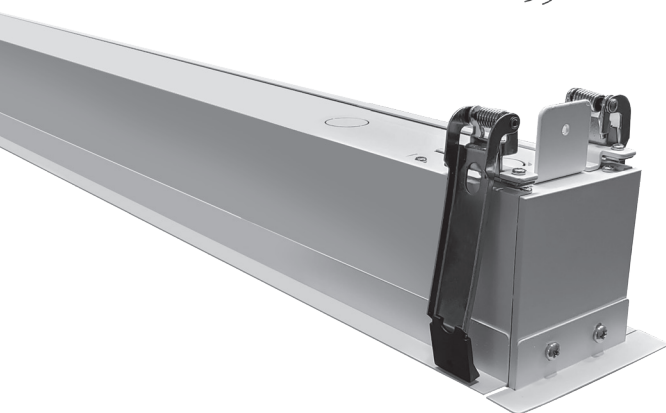
4FT LWH:

47.48" x 2.75" x 3.15"
(1206 x 70 x 80mm)



8FT LWH:

94.72" x 2.75" x 3.15"
(2406 x 70 x 80mm)



KITS AND OPTIONS:



Recessed Mount Kits

L-ASF04-RMK-BK	Black	4ft
L-ASF04-RMK-WH	White	4ft
L-ASF08-RMK-BK	Black	8ft
L-ASF08-RMK-WH	White	8ft



Recessed Mount Kits OPTION

L-ASF04-RMK2-BK	Black	4ft
L-ASF04-RMK2-WH	White	4ft
L-ASF08-RMK2-BK	Black	8ft
L-ASF08-RMK2-WH	White	8ft

Power Cord

L-ASF-PC-Black	Black	8ft
L-ASF-PC-White	White	8ft



Linkable Bracket

L-ASF-4FTB	4ft
L-ASF-8FTB	8ft



Intertek

The ETL Listed mark is an indicator of the product's compliance with safety regulations, recognized and accepted by the UL and CSA marks. As Intertek's ETL subjects' products to UL standards for safety, products marked as ETL Listed meet the same ridged criteria as marked with UL Lister or UL Recognized. Intertek ETL is a Nationally Recognized Testing Laboratory (NRTL) recognized by the Occupational Safety and Health Administration (OSHA).



The Federal Communications Commission (FCC) is an independent agency of the United States government that was created to regulate all forms of telecommunication inside of the U.S. including the radio frequency (RF) of electronics. Our products are fully tested ensure that they will not electromagnetically interfere with other products nor cause risk to the public as required by law.